



Back Office

Labor Management

RES Labor Management's (LM) powerful program supports the recurrent, high-maintenance requirements of employee data management. Its comprehensive modules help control your restaurant's labor resources to minimize cost and maximize productivity. RES LM allows you to maintain human resource's employee files, support payroll pre-processing, and create staff schedules.



RES Labor Management helps you schedule your staff when and where you need them, recognizing the employees' skills, as well as total hours worked. Minimizes the manager's time scheduling employees and reduces labor costs, providing more time for customers.



Back Office, Business Intelligence,
Customer Relationship Management,
Enterprise Support Solutions, Hardware,
Point-of-Service, Restaurant Operations,
Service Solutions

HUMAN RESOURCES HAS NEVER BEEN EASIER

Maximize the Time Spent with Customers and Minimize Labor Costs

- Get a real picture of payroll expenses
- Gain fast access to all critical labor cost factors
- Schedule staff to minimize costs and service customers to your business standards
- Address overtime costs before they occur with an “approaching overtime” report

Labor Management’s many features are designed to help you better manage the complex employee environment you face on a daily basis.

Intelligent Scheduling

- Calculates schedule costs for regular and overtime hours
- Calculates labor cost percentages by location, job, or job category
- Helps you place the employee with the right skills at the correct station
- Easy to use graphical schedule allows you to cut, copy, and paste for quick adjustments

Complete Payroll Preprocessing

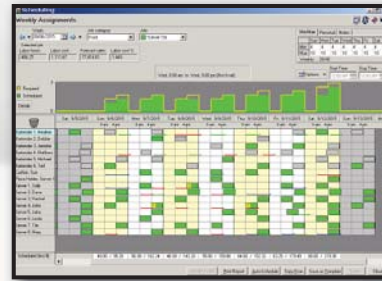
- Supports payment of vacation, sick, and other earnings
- Enforces minimum wage rates, tip credits, and overtime regulations
- Maintains Child Labor Laws including school day calendar
- Provides review of hours worked, sales, and tips for each employee
- Allows adjustments of information by a manager with reason codes

Integrated Human Resources Management

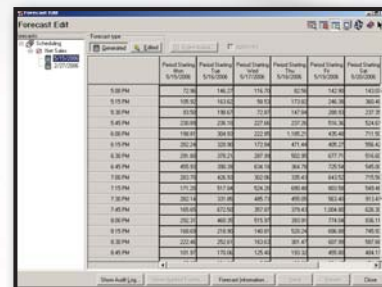
- Manages employee information including personal data, I-9 documentation, and tax filing data for federal, state, and local agencies
- Facilitates employee reviews, evaluations, and certifications
- Maintains schedule availability and requests

Forecasting

- Uses historical POS information to project future budgets
- Tags and stores special event history to forecast future events like holidays, community events, or weather
- Saves labor cost by reviewing sales history in 15 minute intervals
- Uses key volume indicators like customer counts, transactions, sales, etc. to project labor needs



Employee schedule filtered by job from within Labor Management



Projected forecast based on sales