

micros[®] DMB Restaurant Operations

Digital Menu Board

One of the latest tools to emerge in the quick-service market is the digital menu board. A fully integrated feature of the MICROS RES point-of-sale (POS) system, this dynamic technology displays menus while simultaneously drawing customers' attention to other information, like current store promotions. While the quick-service market becomes increasingly aware of the benefits of digital versus traditional menu boards, restaurant owners seek a solid solution that will improve operations and boost customer experience.

Typically sold as an added module or an interfaced product, MICROS includes the Digital Menu Board functionality as a core feature in MICROS RES. So when you're ready to deploy this innovative technology for your business, MICROS is ready with a turnkey Digital Menu Board solution that includes the software, hardware, cabling, and installation.



Back Office, Business Intelligence,
Customer Relationship Management,
Enterprise Support Solutions, Hardware,
Point-of-Service, Restaurant Operations,
Service Solutions



DYNAMIC DIGITAL MENU BOARDS **CAPTURE ATTENTION**

The Integration Advantage

Menu and price changes are made concurrent with POS changes and seamlessly updated in real-time which increases the level of accuracy between the price displayed on the menu and price charged to the customer, thus improving customer satisfaction

Highlights

- Turnkey solution that includes software, hardware, cabling, staging, logistics, and installation
- Automatic process enables employees to focus on customer service and food preparation rather than manually changing the menu
- RES Enterprise Management (EM) allows Corporate to manage content for the store's menu board, therefore no input is needed for the individual store
- Remote access to monitor display status included as core functionality in MICROS RES, customers are exempt from additional software costs

Powerful Marketing Capabilities

- Attention-grabbing graphics used to promote daily specials and up selling which can increase revenue
- Ability to create custom graphics provides branding opportunities and a specialized feel for the store's menu display
- Displays drive additional traffic to the store, create more product interest, and help build customer loyalty
- Displays can also be used for training purposes

Web-enabled Design

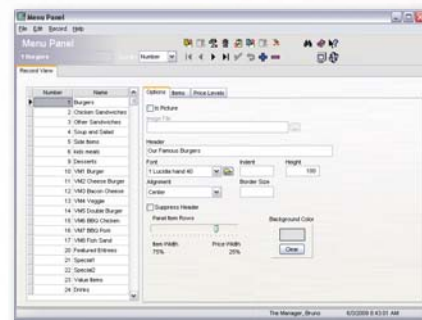
- Created as a custom-designed web page that dynamically updates its content based on preconfigured settings
- Incorporates the use of a web browser, ASP application, and web service to deliver customized content to the menu board display
- Supplies the basic content with purchase options for specialized content

NEC P Series LCD Displays

The 40" and 46" LCD displays provide a first-class solution for digital signage applications. High contrast, industrial-strength design and Enhanced Digital Signage Technology Suite (DSTS), which boasts more than 30 advanced features, make these displays ideal for 24/7 operations in even the most harsh environments.

Highlights

- Broad range of inputs, including DVI, VGA, component, composite, HDMI, and DisplayPort
- Thermal protection to diffuse heat followed by fan-based technology specifically designed to work in both landscape and portrait modes
- Sealed panel design provides protection in less than optimal environments, while protecting against particles like dust, grease, or steam
- 1920x1080 full high-definition image with up to 650 cd/m² brightness and up to 4000:1 contrast ratio
- Eco-friendly features include an ambient light sensor, which ensures consistent brightness no matter the lighting conditions
- RS-232 enables multi-display control and daisy chain, allowing for individual and group-addressable control, and simple effective setup and monitoring of the display
- Thin-bezel design makes these displays ideal for side-by-side menuboard applications
- A unique 5-Year Next Day, Onsite Hardware Warranty



Updated in real-time to keep up with your growing business needs

DISPLAY SPECS

MODEL	P401	P461
LCD MODULE		
Viewable Size (Diagonal)	■ 40"	■ 46"
Panel Technology	■ SPVA	
Native Resolution	■ 1920 x 1080	
Pixel Pitch	■ 0.46mm	■ 0.53mm
Brightness (Typical/Max)	■ 500 cd/m2/ 650 cd/m2	
Contrast Ratio (Typical)	■ 3000:1	■ 4000:1
Active Screen Area (WxH)	■ 34.9 x 19.6in. / 885.6 x 498.2mm	■ 40.1 x 22.5in / 1018.1 x 572.7mm
CONNECTIVITY		
Input Terminals	■ DVI-D, Analog 15-pin D-sub, 5 BNC (RGBHV), Display Port, Composite (Shared RCA and BNC), S-Video, HDMI, Component BNC	
Audio	■ Audio 1 (MiniJack), Audio 2 and 3 Stereo (RCA), HDMI / Internal Speaker: None	
External Control	■ RS-232 for multiple monitor control, Ethernet, IR, DDC/CI	
Audio Amplifier	■ 15W Stereo	
ADDITIONAL FEATURES	■ Thin bezel, advanced thermal capabilities, sealed panel, expansion slot, Ethernet Control/Communication, TileMatrix (10x10), PIP (remote), multi-level programmable zoom, scheduler (w/ RTC), off-timer (countdown), screen saver, vacation switch, AutoBright (signal input), IR, portrait-capable, metal rear cabinet, handles, touch- and protective screen-ready, ambient light sensor, carbon footprint meter	
POWER		
Power Requirements	■ AC 100-120V / AC 220-240V@50/60 Hz	
Power Consumption (Typical)	■ 175W	■ 210W
Power Consumption-Standy Mode	■ <1W	
PHYSICAL SPECIFICATIONS		
Bezel Width (L/R, T/B)	■ 0.61 in. / 0.61 in. , 15.5mm / 15.5mm	0.65 in. / 0.65 in. , 16.5mm / 16.5mm
Dimensions (without stand; WxHxD)	■ 36.2 x 21 x 5.5 in. / 919.7 x 532.2 x 140mm	■ 41.6 x 24 x 5.5 in. / 1055.4 x 608.6 x 140mm
Dimensions (without stand; WxHxD)	■ 42.3 x 26.9 x 11.8 in. / 1074 x 682 x 300mm	■ 46.5 x 30.8 x 11.8 in. / 1180 x 782 x 300mm
Net Weight (without stand)	■ 52.9 lbs. / 24 kg	■ 63.9 lbs. / 29 kg
Gross Weight (with box)	■ 66.1 lbs. / 30 kg	■ 79.4 lbs. / 36 kg
VESA Hole Configuration	■ 300 x 300mm (4 hole)	
ENVIRONMENTAL CONDITIONS		
Operating Temperature	■ 5-40°C / 41-104°F	
Operating Humidity	■ 20-80%	
INCLUDE ACCESSORIES		
Power cord, 15-pin D-sub cable, setup sheet, wireless remote control, batteries, main switch cover, CD-ROM (user manual)		

MICROS DDC Front I/O



MICROS DDC Rear I/O



MICROS Digital Display Controller

Platform	<ul style="list-style-type: none"> Onboard Intel® Atom™ 1.6GHz Intel 945GSE+ICH7M AMIBIOS with 4Mbit BIOS Flash
System Memory	<ul style="list-style-type: none"> 1GB DDR2 533 SDRAM
Storage Interface	<ul style="list-style-type: none"> CompactFlash I/II 1 SATA Port 1
Networking	<ul style="list-style-type: none"> 2 x 10/100/1000 Mbps LAN Ports
Display Controller	<ul style="list-style-type: none"> Intel 945GSE built-in Intel Extreme Graphics
Audio	<ul style="list-style-type: none"> ALC888 HD 97 Codec
Back I/O	<ul style="list-style-type: none"> Serial RS-232 x2, 1 VGA, 1 DVI-D
Front IO	<ul style="list-style-type: none"> Power switch, 4 USB 2.0, 2 LAN RJ45, DC-in power jack x1, Mic Line out
Expansion	<ul style="list-style-type: none"> Mini-PCI socket (optional)
Hardware Monitoring	<ul style="list-style-type: none"> Winbond W83627 HG integrated hardware monitor 256-level software programmable watchdog timer
OS Supported	<ul style="list-style-type: none"> Embedded Windows XP, Embedded Windows CE, Linux, WindowsXP
Environmental Parameters	<ul style="list-style-type: none"> Temperature, ambient operating: -20°~50°C Relative humidity, noncondensing: 5~95% Storage Temperature: -20°~70°C (-4°~158°F) Shock CFD: 100g peak acceleration (6 msec duration)
Power	<ul style="list-style-type: none"> 140D x 190W x 36H mm Weight: 1.07Kg DC +12V, 60W